



The SmartCare® Healthcare Business Intelligence System

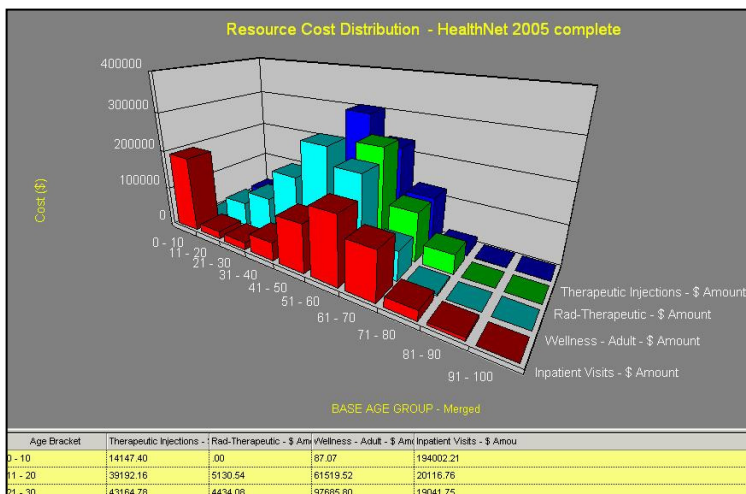
SmartCare® is advanced Business Intelligence software that is actually 6 systems in 1: a data warehouse with data mining, ad hoc query, report writer, statistical analysis, and 3-D graphics applications. It produces Pay-for-Performance, quality and core measure reports, and has strong predictive modeling, contract analysis, provider benchmarking, disease management, claim review, and resource utilization modules. It automatically transforms your data into episodes-of-care, shows practice patterns, and organizes a massive amount of useful information across more than 250 user-definable demographic, clinical and administrative fields. Users can explore the data as much as they like in their own way, confident that the results will arrive in seconds and be displayed with striking graphs. By putting your data to work, it can save you money and provide a significant competitive advantage. It is an entire research department in a box.

SmartCare is a complete decision-support system that can make a huge difference, *immediately*. While comparable systems can take from 6-12 months to implement, a SmartCare implementation takes less than 2 weeks, *including data conversion*. It can merge all types of claims, electronic medical records, patient survey, and plan membership data into a unified knowledge base that can be your enterprise-wide data platform. As far as the future is concerned, SmartCare is the only product in the healthcare data analysis field that can store electronic medical records with claims data and analyze them *separately or together using the same screens* right now. It can drilldown into practice patterns, and show how financial and clinical patient data interact.

According to both The Gartner Group and Forrester Research, SmartCare has more functionality and costs much less than its competitors. There is no single system with SmartCare's capabilities in healthcare IT today.



- Increase the speed of analyzing data **by over 1,000%**, literally from hours to seconds. Easily generate hundreds of thousands of customized reports and queries with unlimited selection criteria. Rapidly analyze and manage a wide range of contract, episode-of-care, reimbursement, and many other issues.
- Reduce the implementation time **by over 95%**, from months to a few days, including the entire data mapping and loading process. The data conversion bottleneck has been eliminated.
- Excellent for employers, health plans, and providers for modeling and monitoring all forms of healthcare contracts. Design carve-out strategies, test new utilization and cost models, and create severity-adjusted risk pools to control risk, forecast trends, and understand the relationship between costs and quality of care. Drill down into individual cases all the way to the individual treatment codes of a specific claim, and also drill



up to find those episodes containing any specific data element.

- Proactively manage providers with extensive profiling functions. Quickly uncover atypical utilization patterns in a patient population, isolate the most expensive episodes, and then effortlessly see trend lines and standard deviations.
- Track patients over time and across datasets for case and disease management. Works with all grouper/risk adjustment software.

SmartCare Delivers Answers Fast

Functions:

- Merges inpatient, ambulatory, professional, lab, pharmacy, and medical record data.
- Imports membership data to analyze eligibility and report on HEDIS and other quality measures.
- Automatically rolls-up data into episodes-of-care based on user-defined rules.
- Monitor and forecast contract resource utilization levels with carve-out and other “what if” options.
- Create severity-adjusted risk pools out of larger populations, each with its own data mart.
- Drill down into the episodes-of-care and see actual sequences of treatment codes and prescriptions.
- Integration of any risk grouping software, such as APR-DRGs, CRGs, ETGs, DxCGs, etc.
- Track lab test results and drug regimen compliance to understand clinical trends and claim costs.

Features:

- Import raw data at a rate of 100,000 claims per hour, with data validation.
- Creates episodes-of-care at a rate of 100,000 claims per hour.
- Can store hundreds of millions of records and access them rapidly.
- Intelligible graphs displayed with every query result, along with a graphing toolkit.
- Use statistics such as standard deviation, mean, and best fit with the click of a button.
- Track patients in diagnostic groups longitudinally over time for disease management.
- Simple sliders let you pinpoint the outliers for excessive resource use.
- Paste any chart directly into Excel for further work, as well as immediate report printing.
- HIPAA compliant with encryption and internally generated episode ID/patient identifiers.

Benefits:

- Dramatically increases analyst productivity.
- Find answers in minutes or seconds rather than hours or days.
- Provides literally hundreds of thousands of reports without having to program each one.
- Build custom report libraries by saving custom queries to rerun against other datasets.
- Tremendous contract design and “what if” scenario-modeling capabilities.
- Allows you to control and reduce costs over the life of a contract and negotiate the best fee schedules.
- Easily identify and then monitor patients for disease and case management programs.

Technical Requirements

Operating System:

- Server: Microsoft Windows XP, 2000 Server or higher.
- Workstation: Microsoft Windows XP, 2000 Professional or higher.

Database Management System Options:

- Microsoft SQLServer2000/2005.
- Oracle 9i or higher.

Hardware:

- Server: Pentium 4, 2.0GHz or higher (dual processor recommended with over 20 million record datasets), min. 8 GB of RAM, min. 100 GB of disk storage.
- Workstation: Pentium 4, 2.0GHz or higher, min. 2 GB of RAM, 40 MB of disk storage.
- All data stored on server. Results may be copied onto workstation.
- SmartCare on the Internet: Uses Citrix Metaframe, with simple PC plug-in.

